

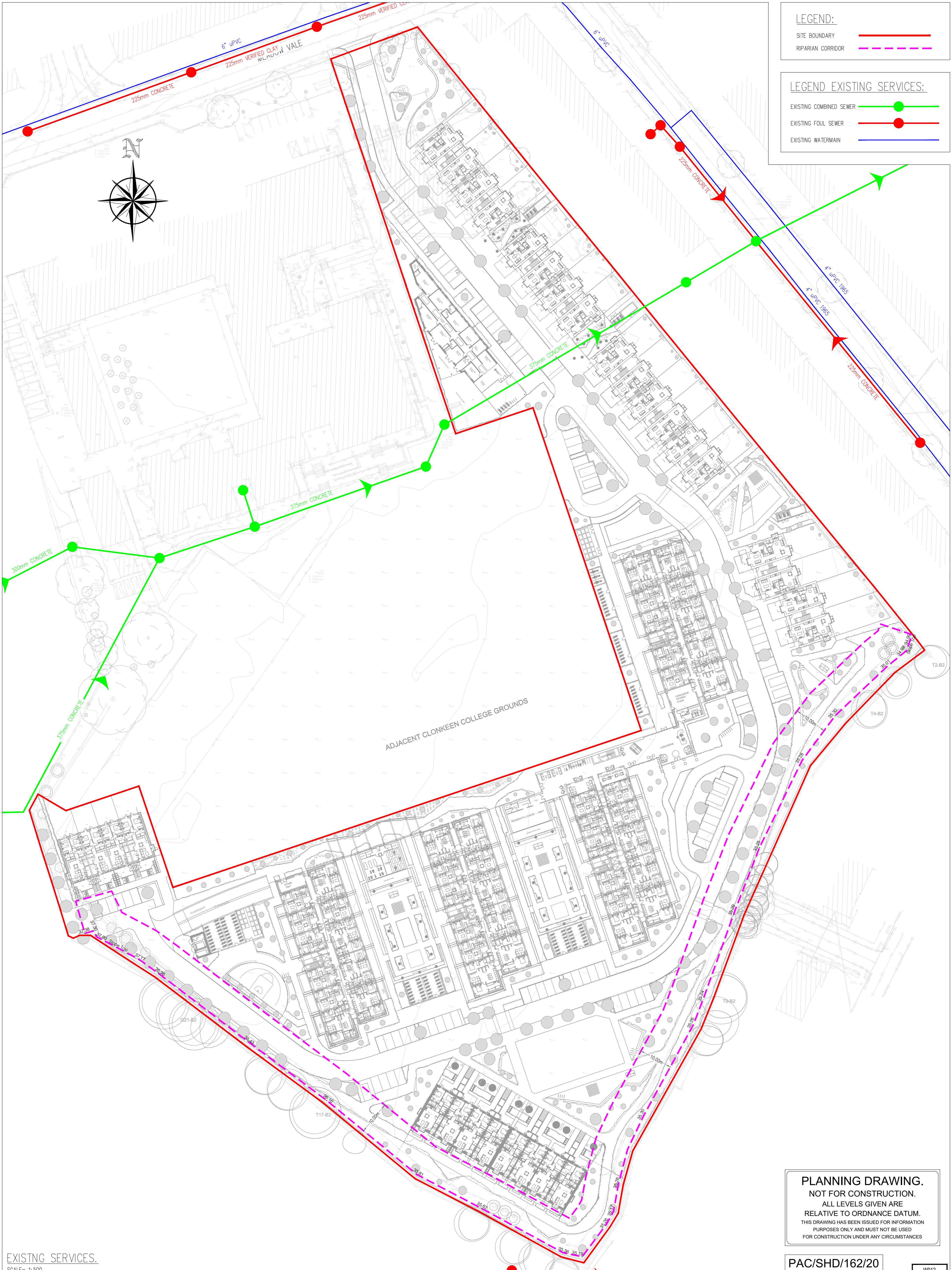


**LEGEND:**

SITE BOUNDARY	
RIPARIAN CORRIDOR	

**LEGEND EXISTING SERVICES:**

EXISTING COMBINED SEWER	
EXISTING FOUL SEWER	
EXISTING WATERMAIN	



ADJACENT CLONKEEN COLLEGE GROUNDS

**PLANNING DRAWING.**  
 NOT FOR CONSTRUCTION.  
 ALL LEVELS GIVEN ARE  
 RELATIVE TO ORDNANCE DATUM.  
 THIS DRAWING HAS BEEN ISSUED FOR INFORMATION  
 PURPOSES ONLY AND MUST NOT BE USED  
 FOR CONSTRUCTION UNDER ANY CIRCUMSTANCES

PAC/SHD/162/20 W012

EXISTING SERVICES.  
 SCALE= 1:500

- NOTES**
- For setting out refer to Architect's drawings.
  - This drawing to be read in conjunction with all other Architectural and Engineering drawings and all other relevant drawings and Specifications.
  - DO NOT SCALE THIS DRAWING. Use figured dimensions only.
  - No part of this document may be reproduced or transmitted in any form or stored in any retrieval system of any nature without the written permission as copyright holder except as agreed for use on the project for which the document was originally issued.
  - Ordnance Survey Ireland Licence Number EN 0074021

Rev. No.	Date	REVISION NOTE	Drn. By	Chkd. By
P1	13.10.2020	ARCHITECTS LAYOUT REVISED	JS	OS
P2	15.06.2021	ARCHITECTS LAYOUT REVISED	JS	OS

Architect	Scott Tallon Walker	
Project	Proposed Development at Clonkeen Road	
Title	Existing Services	
Dwg. No.	W012-CSC-ZZ-XX-DR-C-0003	
Date	Drn. by	Chkd. By
02.06.2020	JS	RFM
Scale	1:500 @A1	Revision
		<b>P2</b>

**CS Consulting Group**  
 DUBLIN | LONDON | LIMERICK

Head Office  
 19-22 Dame Street, Dublin 2.  
 T: +353 (0)1 5480863 F: +353 (0)1 9011355  
 e: info@csconsulting.ie  
 w: www.csconsulting.ie

Quality  
 Environment  
 Energy

NSAI  
 Certified

I.S. EN ISO 9001:2008  
 I.S. EN ISO 14001:2004  
 I.S. EN ISO 50001:2011  
 OHSAS 18001:2007